



FRIENDS FOR LIFE

A PUBLICATION OF
SOCIETY FOR THE PREVENTION OF CRUELTY TO ANIMALS LOS ANGELES

spcaLA
Friends for life.®

VOL. 24 - 2020



FROM THE PRESIDENT

Dear Friends,

In December 2019, a tiny kitten named **Cinder** was brought to spcaLA – bleeding and dirty. At just a few months old, he'd been attacked. Twice.

Bitten by an unknown animal, and also used as target practice by humans (BB pellets littered his tiny body), Cinder needed critical care.

To save his life, Cinder's leg had to be amputated. What's more, by law, Cinder had to **go into quarantine for 6 months**.

During that half-year, the world outside of spcaLA seemed at once to stop and move faster than light.

But, thanks to you and your support, Cinder's care never changed.

We treated his wounds. We gave him a safe, warm bed, nourishing food, and plenty of TLC. For Cinder, quarantine ended in June. He found his forever family days after being cleared for adoption.

Cinder reminds me - I know that spcaLA will get through this time, because just like him, we have the support of people like you.

[If you are able, please make a donation to support spcaLA.](#)

Thank you,

A handwritten signature in black ink, appearing to read 'M Bernstein'.

Madeline Bernstein
President, spcaLA

P.S. There is no national spca or humane society, nor is spcaLA a chapter of any group.

spcaLA IS DEDICATED TO THE PREVENTION OF CRUELTY TO ANIMALS THROUGH EDUCATION, LAW ENFORCEMENT, INTERVENTION, & ADVOCACY.

On March 17th 2020, spcaLA closed our doors, for what we were hopeful would be just two weeks.

That's when we got to work.

From kitchen tables on Zoom calls, we completely revamped spcaLA operations. We developed ways to keep our pets & people safe, while still working to prevent cruelty to animals.

Pet adoptions, foster classes, summer camp, dog training classes, violence-prevention programs, the spcaLA Marketplace and more went virtual, by-appointment, and contact-free.

Now, eight months into the pandemic, we continue to prevent cruelty to animals, though our operations may look a little different.

For more information, visit spcaLA.com/covid19

PETS AT HOME

From March to August, our counselors received thousands of adoption inquiries (**more applications than we had animals!**), and followed up with each by phone to place pets with their new Friends for Life.



2,493 PETS

in homes — adopted, reunited, or sent to rescue partners.



557 ONLINE

& by appointment

VOLUNTEERS

During the pandemic, volunteer activities shifted to foster and advocacy work from home.

30,723

 VOLUNTEER & FOSTER HOURS

donated generously by **163 volunteers**
Pre-covid at spcaLA locations and events



21,362

 HRS

donated by foster volunteers

54

NEW FOSTER PARENTS
recruited & trained
during the pandemic



469

Pets fostered



VIOLENCE PREVENTION & HUMANE EDUCATION

Visit spcaLA.com/education
for more information.

We adapted existing curriculum to a virtual format, and offered a host of new programs for youth and families, including webinars, workshops, and online classes for youth & their pet dogs.

Animal Safety Net (ASN)™
(temporary care for the pets of domestic violence survivors) and the **spcaLA Court Diversion Program for Youth** continue to operate in-person.

32 FAMILIES

61 PETS



► helped by the Animal Safety Net (ASN)™.

3,049



► youth & adults
**rekindled empathy
& compassion** at
violence-prevention
humane education
initiatives.

ANIMAL BEHAVIOR & TRAINING

Visit spcaLA.com/training
for more information.

spcaLA offers virtual and in-person dog training classes, as well as a host of free resources for the public including webinars, the animal behavior library, and our free behavior helpline.

670

**ANIMALS
TRAINED**



► Trainers worked directly with animals including survivors of animal cruelty and pets in the **Animal Safety Net program**

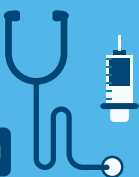


241

**VOLUNTEERS
& STAFF**

trained to provide
enrichment and
training exercises
for shelter pets.

VETERINARY SERVICES



4,659

exams performed on
shelter pets by **spcaLA
veterinarians**.

11,490

veterinary procedures
completed (vaccinations,
wound care, & more).

ANIMAL CRUELTY INVESTIGATIONS

1,661

► **animals protected**
by spcaLA Humane
Officers conducting
Animal Cruelty
Investigations.



• Criminal cases ranged
• from cockfighting to
• the abuse and neglect
• of companion animals.

spcaLA EXPENSES



78% Programs
11% Management/General
11% Fundraising



MAKE GIVING, YOUR GIFT

spcaLA.com/gift



SEND A CARD

Use the enclosed envelope or donate online, and we'll send a card to celebrate the special people or pets in your life.



SEND AN E-CARD

Choose from a variety of holiday and other eCards, featuring spcaLA shelter pets.



NAMING OPPORTUNITY

Purchase online or call **(323) 730-5300, x3253**. Opportunities range from \$50 to \$2,500.



Give by **December 14th** to ensure Christmas delivery of cards & naming opportunity certificates.

LOCATIONS

Programs & services may be offered online, in-person, or as a hybrid. Visit spcaLA.com/covid19 for updates.

spcaLA Pet Adoption Center & Administration

5026 West Jefferson Blvd.
Los Angeles, CA 90016
(323) 730-5300

spcaLA South Bay Pet Adoption Center

12910 Yukon Ave.
Hawthorne, CA 90250
(310) 676-1149

spcaLA P.D. Pitchford Companion Animal Village & Education Center

7700 East Spring St.
Long Beach, CA 90815
(562) 216-2542



spcaLA Marketplace

Visit the spcaLA Marketplace for all-natural pet foods and high quality treats and toys.
(562) 206-1376

REPORT ANIMAL CRUELTY: 800-540-7722



5026 West Jefferson Boulevard
Los Angeles, CA 90016
(888) 772-2521
www.spcala.com

Thank you!

Nonprofit Org.

U.S. Postage

PAID

Permit #4330

Los Angeles, CA